

TOWER HAMLETS TOGETHER (THT) INFORMATION PACK



This information pack contains answers to frequently asked questions about Tower Hamlets Together and its partners. We hope you find it helpful. We are so excited to showcase why Tower Hamlets is such a great place to work, with plenty of career opportunities across our seven organisations.

CONTENTS

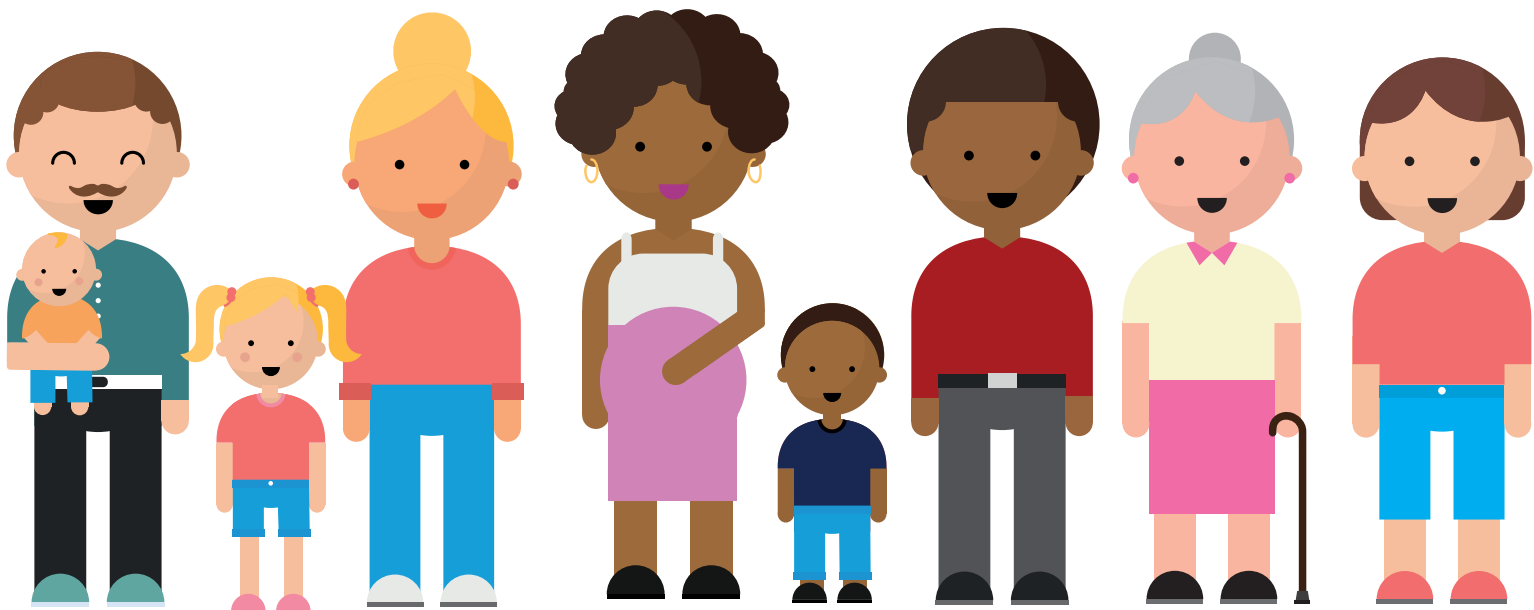
Introduction	3
Overview	4
What is Tower Hamlets Together?	5
1. Barts Health NHS Trust	6
2. East London NHS Foundation Trust (ELFT)	7
3. GP Care Group	8
4. Healthwatch Tower Hamlets	9
5. NHS North East London	10
6. Tower Hamlets Council	11
7. Tower Hamlets Council for Voluntary Services (THCVS)	12
Plan on a Page	14
Tower Hamlets Together Leadership Principles	15
Examples of our working together	16
Benefits of working in Tower Hamlets	18
Notes	19

INTRODUCTION

We've pulled together some information in this pack that we hope you'll find helpful.

It contains information about the Tower Hamlets Together partnership and the 7 organisations that sit in that partnership.

Click into the links for each organisation to view current vacancies available.



OVERVIEW

Tower Hamlets is truly unique, offering some of the very best of London, packed into one dynamically diverse borough. We're moving forward, boldly proving that Tower Hamlets epitomises our capital's rich past, its exciting future and the energy that drives it all forward.

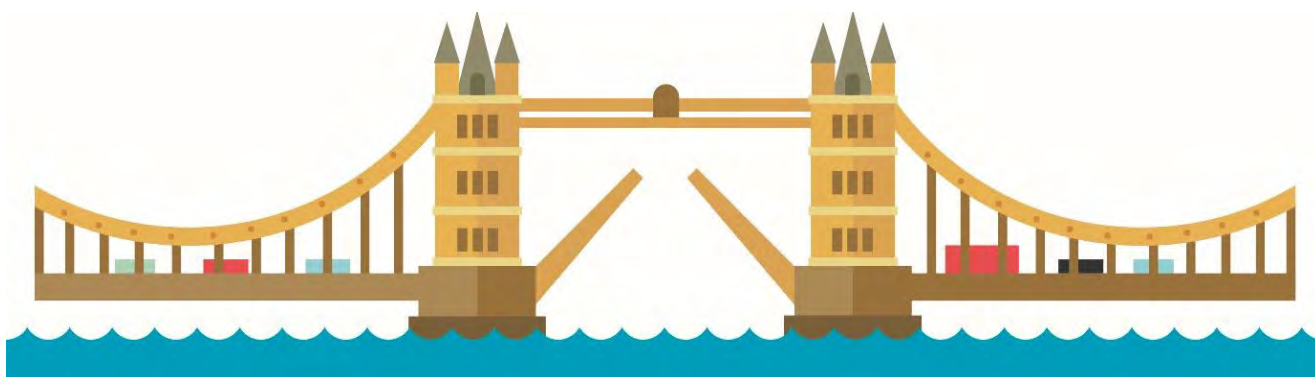
Rooted in layers of history, stretching back almost 1,000 years, Tower Hamlets today is a youthful, ambitious and vibrant place.

Always a global gateway for new people, new products, new trades and new ideas, Tower Hamlets is a borough of opportunity that leads the way as the heart of London moves east.

Our learning institutions lead the world, and our people work hard to build fulfilling lives, stronger communities and a better world. Combining some of London's best destinations with hundreds of cultural and community activities, there is always something new to experience.

Shaped by our environment of dense development, open spaces, commercial drive and the constant surge of the river, our cultural life thrives. We embrace our diversity, and we know the value of difference. We are a globally influenced community. We understand that where cultures contrast and ideas intersect, is also where minds can meet, and everyone can feel at home.

Welcome to Tower Hamlets.



WHAT IS TOWER HAMLETS TOGETHER?

Tower Hamlets Together is the borough's vision of a seamless health and care experience for its citizens.

A major milestone in the Tower Hamlets Together journey was our success at attracting significant national funding through the three-year Tower Hamlets Together Vanguard Programme, which concluded on 31st March 2018.

The borough's long history of collaboration and joint-working between the health and care systems was key to gaining the funding, and the subsequent programmes and projects that we were able to develop, 'new models of care', have given local residents improved health experiences and better care.

With the conclusion of the funding, the work has now been absorbed by the partnership and the governance structure developed to sustain and build upon the foundation, becoming a base for the exciting developments and improved system changes Tower Hamlets Together aim to introduce going forward.

Made up of a partnership of local health and social care organisations, at the centre of Tower Hamlets Together is our ambition to improve the health and wellbeing of people living in Tower Hamlets. This means a more coordinated approach to providing services, reducing duplication and improving the overall experience and outcomes for the people who need them.

The 7 organisations that make up the partnership are:

1. Barts Health NHS Trust
2. East London NHS Foundation Trust (ELFT)
3. GP Care Group
4. Healthwatch Tower Hamlets
5. NHS North East London
6. Tower Hamlets Council
7. Tower Hamlets Council for Voluntary Services (THCVS)





1. BARTS HEALTH NHS TRUST

With a turnover of £2.2 billion and a workforce of almost 21,000, Barts Health NHS Trust is a leading healthcare provider in Britain and one of the largest NHS trusts in the country. The Trust's five hospitals – St Bartholomew's Hospital in the City, The Royal London Hospital in Whitechapel, Newham Hospital in Plaistow, Whipps Cross Hospital in Leytonstone and Mile End Hospital – deliver high quality compassionate care to the 2.5 million people of east London and beyond, including delivering over 14,000 babies every year and treating 6,200 patients daily.

Barts Health NHS Trust showcases a range of job opportunities across the Trust.

LINKS

Barts Health NHS Trust
www.bartshealth.nhs.uk

Job opportunities
www.bartshealth.nhs.uk/jobs



2. EAST LONDON NHS FOUNDATION TRUST (ELFT)

ELFT provides a wide range of mental health, community health, primary care, wellbeing and inpatient services to young people, working age adults and older adults across Tower Hamlets, the City of London, Hackney, Newham, Bedfordshire and Luton. The Trust also offers a range of psychological Talking Therapy services across Tower Hamlets and throughout the rest of its wide footprint.

Operated by ELFT, Tower Hamlets Community Health Services provides high quality patient care and services to the residents of Tower Hamlets. The service is provided on a locality basis for District Nursing, Physiotherapy and Occupational Therapy in four Extended Primary Care Teams.

LINKS

East London NHS Foundation Trust
www.elft.nhs.uk

Job opportunities
www.elft.nhs.uk/working-for-us/job-vacancies



3. GP CARE GROUP

The Tower Hamlets GP Care Group was formed in late 2013 with the goal of bringing Tower Hamlets GP practices together (as a GP Federation) to better support the local population and to work alongside other healthcare providers in the borough. The GP Care Group allow all partner practices in Tower Hamlets to speak with one voice and to work collectively on innovative ventures.

Our mission is: "To improve the health and wellbeing of the residents of boroughs that we serve by providing excellent community and primary care in partnership with others".

We provide of a number of primary care and community health services within Tower Hamlets, such as the 0-19 children and family service which includes Health Visiting and School Health. The borough's Out of Hours GP services, Urgent Treatment Centre based in Royal London Hospital, health advocacy, interpreting services and the patient experience team are also among the services we provide.

See the NHS Jobs website for all vacancies at GP Care Group.

LINKS

GP Care Group
www.gpcaregroup.org

Job opportunities
<https://bit.ly/4cG4Db2>





4. HEALTHWATCH TOWER HAMLETS

Healthwatch Tower Hamlets is the local, independent health and social care champion in the borough. From Bethnal Green to the Isle of Dogs and everywhere in between they make sure that NHS Leaders and other decision-makers hear the people's voice and use their feedback on local services to improve care.

They do this by visiting local services and engaging with local communities to collect feedback and create reports with key findings and recommendations to present to those involved in the planning and commissioning of services.

Healthwatch also provides information and advice to the public about accessing health and social care services and a range of volunteering opportunities from community engagement to research and data analysis.

LINKS

Healthwatch Tower Hamlets

www.healthwatchtowerhamlets.co.uk

Volunteering opportunities

www.healthwatchtowerhamlets.co.uk/volunteer

Job opportunities

www.healthwatchtowerhamlets.co.uk/work-us



5. NHS NORTH EAST LONDON

North East London has a growing population of over two million people and is a vibrant, diverse and distinctive area of London steeped in history and culture.

NHS North East London, along with its partners, works to make sure that the population of North East London is healthy and thriving, with good levels of mental wellbeing, and good access to high-quality health and care services.

NHS North East London works with and for all the people of North East London to create meaningful improvements in health, wellbeing and equity.

Through planning and commissioning health services across North East London to meet its population's needs, NHS North East London makes sure all parts of the local health system work effectively together. It does this by bringing together health partners, local authorities and the voluntary, community and social enterprise sector, alongside residents, patients and service users to improve how we plan and deliver care and support services.

NHS North East London was formed on 1 July 2022 following the Health and Care Act 2022 and replaced North East London Clinical Commissioning Group. It is responsible for deciding how the local healthcare budget of nearly £4 billion is spent and does this by working with our local health and care partners. Browse exciting job opportunities with NHS NEL.

LINKS

NHS North East London
northeastlondon.icb.nhs.uk

Health and Care Act 2022
bills.parliament.uk/bills/3022

Job opportunities
northeastlondon.icb.nhs.uk/our-organisation/jobs-board



6. TOWER HAMLETS COUNCIL

The London Borough of Tower Hamlets, also known as 'the council', is responsible for providing local services and facilities to residents, as well as social care provision. Tower Hamlets Adult Social Care provides advice and support for adults from the age of 18 who may have:

- A physical or sensory impairment
- A learning disability
- Mental illness
- Adults whose independence is at risk due to age or frailty

Children's Services includes Education, Early Help, Youth Justice Service, Young Tower Hamlets and Children's Social Care. The support provided by Children's Services includes:

- Assisting children living with disability
- Supporting children with additional needs
- Intervening to protect children from harm
- Caring for children looked after by the Local Authority

Our main focus is to help people identify ways in which they can continue to live their lives in the way they wish and to maintain their independence where possible. The council also commissions public health services that help promote healthy living. Discover the amazing job opportunities at Tower Hamlets Council - from social care to communications.

LINKS

Tower Hamlets Council
www.towerhamlets.gov.uk/Home.aspx

Tower Hamlets Connect
www.towerhamletsconnect.org

Job opportunities
www.towerhamlets.gov.uk/lgnl/jobs_and_careers/jobs_and_careers.aspx



TOWER HAMLETS

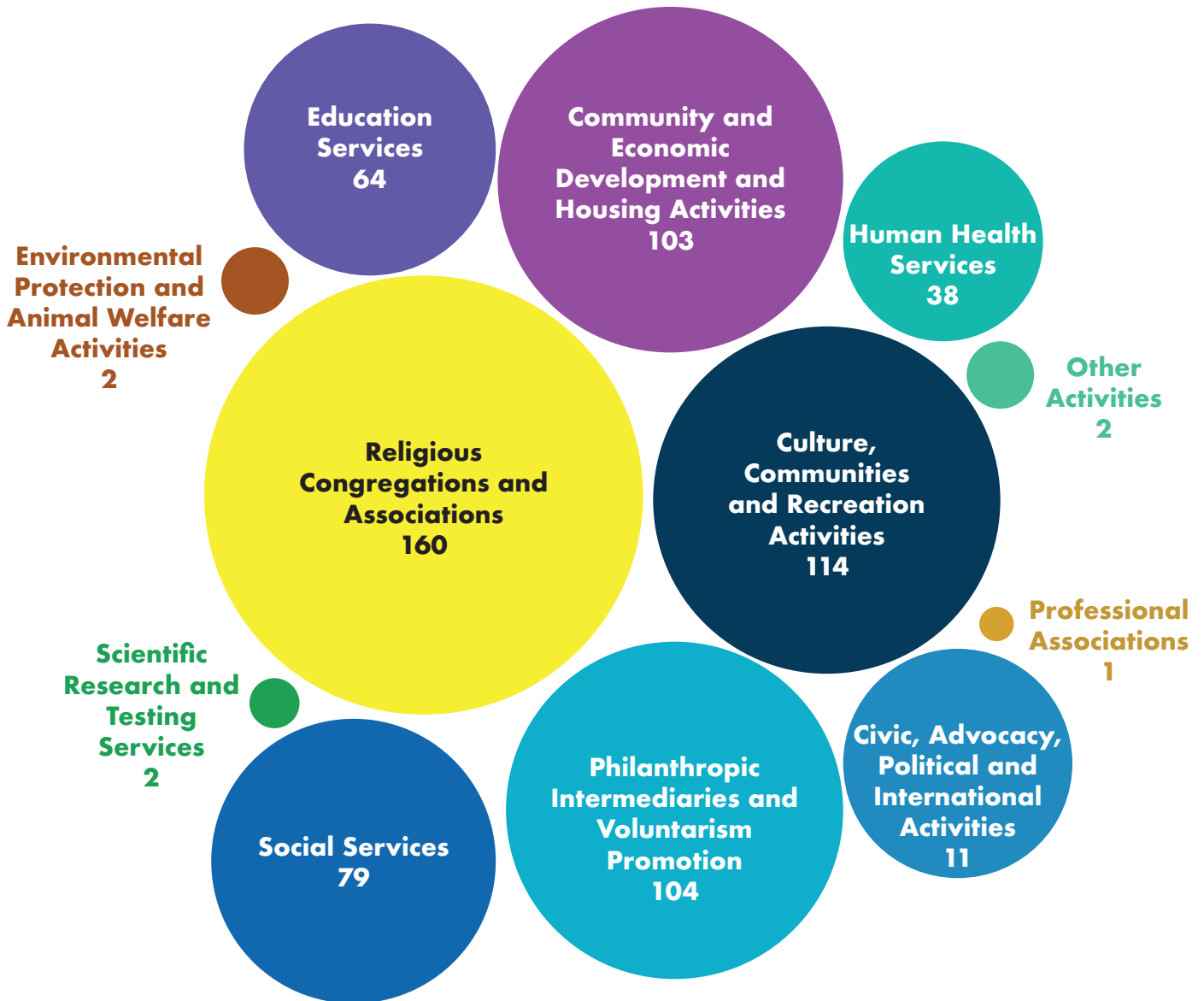


7. TOWER HAMLETS COUNCIL FOR VOLUNTARY SERVICES (THCVS)

THCVS is an independent membership organisation for voluntary, community, faith and social enterprise organisations. It offers training courses, advocacy, free advice, support and networking opportunities through numerous events to their membership, which currently consists of more than 400 organisations.

As a vital part of the integrated care system the voluntary & community sector (VCS) holds the answer to many of the challenges and inequalities faced by this inner-city borough. A large majority of VCS organisations work across health, and they often have the trust of local communities and reach those residents who tend not to engage with health services.

The voluntary & community sector in the borough is both large and diffuse. There are 551 charitable organisations registered in the borough, but they are primarily made up of small and medium sized organisations. Charity Commission data tells us that 55% of charities based in the borough have an annual turnover of less than £100,000. The sector brings in at least £200m into the local economy, with over 25,000 volunteers and nearly 3,200 trustees recorded with the Charity Commission. It is also a large local employer employing c.4,300 people in Tower Hamlets and attracts people who want to make a real difference to their communities. Many jobs are advertised on the THCVS jobs page. One route into employment in the VCS is through volunteering, and the Volunteer Centre Tower Hamlets advertises a number of opportunities.



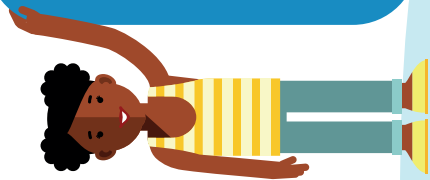
For Kane Data analysis of Charity Commission data, visit <https://public.flourish.studio/visualisation/14413480>

LINKS

Tower Hamlets CVS
thcvs.org.uk

Job opportunities
thcvs.org.uk/our-vacancies

Volunteer Centre Tower Hamlets
www.vcth.org.uk/volunteering-in-tower-hamlets



Who are we?

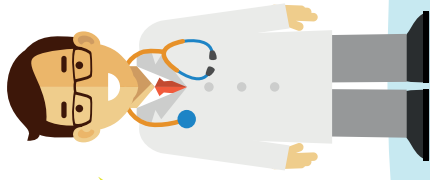
Tower Hamlets Together is a partnership of health and care organisations that are responsible for the planning and delivery of health and care services. The partnership includes:

- London Borough of Tower Hamlets
- NHS North East London Integrated Care Board
- Tower Hamlets GP Care Group
- East London NHS Foundation Trust
- Barts Health NHS Trust
- Tower Hamlets Council for Voluntary Service
- Healthwatch Tower Hamlets

THT is all about health and social care organisations working more closely to improve the health and lives of people living in Tower Hamlets. This means a more coordinated approach to providing services, reducing duplication and improving the overall experience and outcomes for the people who need them.

THT VALUES

We are compassionate
We collaborate
We are inclusive
We are accountable



What are we trying to achieve?

OUR VISION

- Tower Hamlets residents, whatever their backgrounds and needs, are supported to self-care, thrive and achieve their health and life goals
- Health and social care services in Tower Hamlets are accessible, high quality, good value and designed around people's needs, across physical and mental health and throughout primary, secondary and social care
- Service users, carers and residents and children are active and equal partners in health and care, equipped to work collaboratively with THT partners to plan, deliver and strengthen local services
- All residents - no matter their ethnicity, religion, gender, age, sexuality, disability or health needs - experience equitable access to and experience of services, and are supported to achieve positive health outcomes

OUR MISSION

Support all children and adults to live happy and healthy lives in Tower Hamlets, through providing integrated services that are accessible to all and actively tackle health inequalities, particularly those caused by systemic racism

OBJECTIVES

1. Building the resilience and wellbeing of our communities
2. Maintaining people's independence in the community
3. Reducing the time people need to be in hospitals/care homes

RESIDENT OUTCOMES

- I feel like services work together to provide me with good care
- I am able to support myself and my family financially
- I am supported to make healthy choices
- Regardless of who I am, I am able to access care services for my physical and mental health
- I have a good level of happiness and wellbeing

PRIORITIES FOR ACTION

1. Improving access to primary and urgent care
2. Enabling healthy living and providing the best support to prevent and manage long term conditions
3. Implementing a localities and neighbourhoods model
4. Facilitating a smooth and rapid process for hospital discharge into community care services
5. Being an anti-racist and equity driven health care system
6. Ensuring that babies, children and young people get the best start in life
7. Providing integrated mental health services and interventions



TOWER HAMLETS TOGETHER LEADERSHIP PRINCIPLES

We are committed to working as partners in a way that promotes compassion, collaboration, inclusivity and accountability. We have developed a set of leadership principles that we aspire to work to in our relationships with each other, as individuals, and as organisations.

These principles were developed by our People and Organisational Development Committee and are reflected in our joint Health and Social Care Workforce Strategy 2021-2024 which all partners contributed to and signed up to:

Be clear about our shared purpose and be stewards of the collective good



Be curious and interested in each other's perspectives to inspire change



Be empowered to tell it like it is and move to action quickly



Be compassionate to each other by recognising the impact of wider 'system effects'



Celebrate innovation and recognise early adopters who take initiative



Share power with those who have real life experiences and have the agency to make change



LINKS

www.towerhamletstogether.com/resource-library?page=3

EXAMPLES OF OUR WORKING TOGETHER

THT Annual Recruitment & Careers Fair

Annual recruitment & careers fair promoting ethos of THT and benefits of working in THT.

Developing benefits of working in Tower Hamlets 'Information pack' to be given out by partners at onset of recruitment.

THT Pilot Induction Programme / THT Partnership Video

The development of a 5-minute THT video which will be used to engage and educate new and existing employees as well as the general public in understanding the Tower Hamlets Together Partnership (THT). This is part of the wider THT Induction Programme.

THT Annual 'Integrated Care' Staff Awards

The Tower Hamlets Together Partnership (THT) was delighted to present its 2nd THT 'Integrated Care' awards ceremony in December 2023. The aim of this virtual event is to celebrate the fantastic work accomplished within the borough by our staff over the last year. 74 nominations with winners and those recognised as highly commended.

We look forward to celebrating the 3rd Staff 'Integrated Care' Awards in February 2025.

THT Annual Community Fair

Over 600 local health and care staff came together at the return of the THT Summer Fair which took place in the Mile End Hospital Gardens on 20th July 2023. It was fantastic to see such a great turnout as well as the wealth of showcased services, with everyone learning about all of the brilliant work that takes place in Tower Hamlets.

THT Summer Fair 2024 saw a record 650 health and care staff.

THT Communications Network

Strengthen the existing communications network with its members, ensuring they take ownership of the running of the network and any actions from it to aid in joint working to avoid duplication. Agree communications protocols (such as handling media enquiries and staff engagement) and identify priority projects with the partnership board that the communications network can collaborate and plan for at a planning workshop.

Raise the profile of the partnership with staff and colleagues within the organisations.

Raise the profile and achievements of the partnership with external stakeholders including local residents and support in the promotion of good news stories e.g. via existing partner channels and project progress/annual reports.

THT Engagement Leads Group (ELG)

This group is chaired by Muna Hassan, THT Board Community Voice Lead. The aims of the

ELG are:

- To support THT programmes involvement of people in their work by providing advice, guidance and insight as required
- To be a forum for people and communities to raise and debate issues related to work for THT and wider determinants such as housing, education and employment
- To develop a focus on health inequalities, their impacts on people and communities in relation to class, race, gender and disability discriminations

Currently the ELG are establishing a community group to wider public involvement in THT and the ELG. The first meeting took place in November 2023 the second will be in Autumn 2024.

THT Coproduction Toolkit

A structured guide to support practitioners to practically implement the values and principles of co-production in their piece of work. For more information, visit

<https://bit.ly/4e8qjxF>



BENEFITS OF WORKING IN TOWER HAMLETS

Culture

Home to some of London's best destinations, when it comes to days out, many people are likely to have visited Tower Hamlets without even knowing it.

We have attractions including the Tower of London, the Young V&A (formerly Museum of Childhood) and the Museum of London Docklands, English National Ballet and Tower Bridge.

You can catch shows at Rich Mix, Genesis Cinema or Wilton's Music Hall, or take part in major annual events including All Points East music festival, BBC Introducing Live in Tobacco Dock and the London Marathon.

Take a walk in our 120 parks and open spaces including the award-winning Victoria Park and part of Queen Elizabeth Olympic Park.

There are world famous markets including Spitalfields, Columbia Road and Petticoat Lane. Brick Lane is a melting pot of food and culture, everything from renowned curry houses and Jewish beigel shops to the Old Truman Brewery with its own market.

If art is your thing then you can visit one of our 22 art galleries including Whitechapel Gallery, or be amazed by the street art that runs through our borough from Brick Lane to Poplar.

But if you look deeper, you will see layers and layers of culture created and infused by generations of immigration, our proud history as the traditional east end and more modern developments such as Canary Wharf which has over 200 cultural events every year.

Community

Differing traditions, faiths and demographics can, of course, create contrasts and even stir tensions but this is massively outweighed by the energy that flows from the need and desire to live, work, relax and prosper together in this tightly defined place. Close-knit communities have always thrived in our distinct urban centres but today, as everywhere shrinks and boundaries disappear within the digital world, there is a growing sense of collective community.

And here, of all places, we can own this societal transition. Probably because we've been so open to the world for so long, we can uniquely take pride in our ability to build bridges, share strengths and coalesce community spirit, right across the borough.

With over 137 spoken languages and 43% of our residents born in over 200 different countries, we are a world borough with a proud history of diversity and equality.

We welcome difference of all kinds and understand that it makes us stronger.

Opportunity

From the very first communities, clustered around the Tower, that grew through trade and commerce to the many waves of immigration that brought new skills, trades, ideas and energy, Tower Hamlets has always been a place of transition, reinvigoration and growth. But always underpinned by one constant and unifying factor: the promise of opportunity.

This is where people come to strive, to thrive, to be fulfilled, to be enriched, to be the best they can be. Whether in education, medicine, business, social inclusion or any other aspect of life choices, it's in the DNA of this place to offer opportunity to all.



THT Resources
www.towerhamletstogether.com

@TH2GETHER
www.towerhamlets.is

