

NHS North East London Integrated Care Board Safeguarding Strategy: Children, Looked after Children and Adults 2022- 2025

Document History					
Version	Author/amendments & contributions	Version Date	Committee & Submission date	Approval date	Review Date
1.0	Belle Farnsworth, Designated Professional Safeguarding Adults. Lyn Glover, Designated Nurse for Safeguarding Children	May 2022			November 2025
2.0	Lyn Glover, Designated Nurse for Safeguarding Children	Updated November 2022	NHS NEL Quality & Safety Committee December 2022		
3.0	NEL Local Safeguarding Children Partnerships (LSCPs) and Safeguarding Adults Boards (SABs)	March 2023			
4.0	Korkor Ceasar Associate Director for Safeguarding children and Celia Jeffreys Associate Director for Safeguarding Adults	April 2023	NHS NEL Quality & Safety Committee April 2023		
5.0	Korkor Ceasar Associate Director for Safeguarding children and Celia Jeffreys Associate Director for Safeguarding Adults	May 2023	NHS NEL Quality & Safety Committee June 2023		
final	Korkor Ceasar Associate Director for Safeguarding children and Celia Jeffreys Associate Director for Safeguarding Adults	January 2024			Updated with NEL priorities for 2024-26

Contents

1. Introduction	4
2. Scope	5
3. Aim	5
4. Strategic Objectives	5
5. Priorities	6
6. Delivering the strategy	6
7. Monitoring the strategy	7
8. Supporting documents / evidenced based references	8
Appendix 1 - Overview of how NEL ICB meets its strategic safeguarding objectives:..	9
Appendix 2 - Glossary of terms and abbreviations	12
Appendix 3 - Figure 3 Safeguarding interfaces in NEL	14

1. Introduction

- 1.1 NHS North East London (NEL) Integrated Care Board (ICB) has a statutory duty to ensure that it makes arrangements to safeguard and promote the welfare of babies, children and young people and to protect adults at risk from abuse or neglect in accordance with the Children's Act 2004, the Care Act 2014 and Health and Care Act 2022. The Health and Care Act 2022, transfers all relevant statutory duties from Clinical Commissioning Groups to ICBs. NEL ICB as a statutory organisation has duties as well as a convenor of the ICS, of which the ICB is one of many partners. The ICB works across the footprint of three Police Business Command Units (BCUs), eight safeguarding children partnerships, eight community safety partnerships and eight safeguarding adult Boards (SABs). NEL ICB is also coterminous with eight Local authorities including the City of London. In relation to safeguarding children it is one of three statutory partners who are collectively accountable as organisations. ICBs have a statutory duty to safeguard children and vulnerable adults as set out in Working Together to Safeguard Children (2018) and the Care Act 2014 statutory guidance. The NHS England Safeguarding Assurance and Accountability Framework clearly sets out safeguarding roles and responsibilities and apply to all ICBs.
- 1.2 This Safeguarding Strategy sets out NEL ICB's approach to commissioning services that safeguard and protect our local population and, in doing so, strengthen the safeguarding arrangements for children and adults across the Integrated Care System (ICS). Children in this strategy encompasses babies, children and includes looked after children. The strategy is a live and overarching document which signals the shift to new ways of working. Under the Health and Care Act 2022, the ICB now has a convening role across the ICS, working more collaboratively and in partnership with Health and Care across NEL. The strategy aligns with the NEL integrated strategy and is part of a suite of safeguarding policies and strategies that support the three shifts required to enable new ways of working which include:
- from reliance on contracts to a focus on developing trusted relationships
 - from focus on individual services /organisations to a system perspective
 - from performance management to support for improvement.
- 1.3 We are a clinically-led organisation that places health improvement and quality at the heart of everything we do. Protecting the vulnerable is a key part of the ICB approach to commissioning and planning together with the system. This is linked to the ICB's responsibility for addressing health inequalities, population health and wider determinants and supports the focus on quality improvement and patient experience, which are integral to our working arrangements.
- 1.4 NEL ICB recognises that there is a need for effective joint working between agencies and professionals who have differing roles and expertise, if vulnerable groups are to be protected from abuse. The NEL ICB will strengthen partnerships between the NHS and local authorities, and with local partners, including groups representing the public and patient perspective, the voluntary sector, and wider public service provision. We expect these bodies to support the change in culture towards greater collaboration and joint working.
- 1.5 NEL ICB, in recognising its duty to make improvements in the quality of primary care, has

appointed Lead/Named GPs for Safeguarding Children and Adults to provide the necessary local leadership and support and to work closely with NHS England as commissioners of these services.

- 1.6 All our work-streams have GP involvement to ensure that our plans make clinical sense locally and that we are addressing issues which our GPs and other clinicians believe need to be tackled to provide better care and quality for our patients.
- 1.7 In addition, our Patient and Public Involvement (PPI) team works with all of the work-streams to make sure the patient and carers voice is heard throughout the commissioning process and that we are tackling issues that matter to them.

2. Scope

- 2.1 NEL ICB is responsible for commissioning and planning health services for a population of over two million residents in collaboration with Health and care partners. The NEL ICB is inclusive of hospital and community health services, social care and non-statutory organisations. Key stakeholders are safeguarding partners, regulators, place-based partnership boards, Healthwatch, Public Health, Delivery Partners, PCNs, Voluntary Sector organisations, acute, primary care and community collaboratives (Appendix 3 -figure 3).

3. Aim

- 3.1 This Safeguarding Strategy sets out the approach taken to ensure that our local populations will receive high quality and safe health care, with a specific focus on the care of the most vulnerable groups. In doing so, it aims to ensure that vulnerable children and adults will be effectively safeguarded against abuse, neglect, discrimination or poor treatment, and treated with dignity and respect for their human rights.

4. Strategic Objectives

- 4.1 NEL ICB's strategic safeguarding objectives are outlined in statute and further described in the NHS Safeguarding Accountability and Accountability Framework (NHSE 2022). NEL ICB demonstrates its compliance with these statutory requirements through Section 11 audits, Children's Act 2004 and NHS Standard Self-Assessment audits (for Children and Adults) (See appendix one for detailed summary).
- 4.2 NEL ICB also demonstrates assurance to NHS England for the services it commissions through compliance with the NHS Oversight Framework (2022/23).
- 4.3 NEL ICB collaborates with the CQC, NHS England and Social Care to ensure on-going monitoring and surveillance of contracts and quality of local services, in particular, Care Quality Commission Essential Standards of Quality and Safety Outcome 7: Safeguarding people who use services from abuse.

5. Priorities

- 5.1 To support the on-going delivery of these strategic objectives, key priority areas are agreed. These reflect current national or local issues or challenges and where NEL ICB identifies that it has a key role to play in providing leadership and positively influencing continuous improvements in safeguarding practice.
- 5.2 The NEL ICB's key priority areas are:
- **Employment and workforce** – to work together to create meaningful work opportunities and employment for people in north east London now and in the future.
 - **Long term conditions** – to support everyone living with a long-term condition in north east London to live a longer, healthier life and to work to prevent conditions occurring for other members of our community
 - **Babies, children and young people** – to make north east London the best place to grow up, through early support when it is needed and the delivery of accessible and responsive services.
 - **Mental health** – to transform accessibility to, experience of and outcomes from mental health services and well-being support for the people of north east London.

6. Delivering the strategy

- 6.1 The strategic objectives and priority areas of focus will be delivered through work plans both within the NEL ICB and with our health system providers at place. Within the NEL ICB, these work plans are overseen at the NEL Safeguarding Forum. Clinical Reference Groups have been established to deliver on key priorities (see Figure 2).
- 6.2 The NEL ICB safeguarding leads for children and adults are integral to the development of service specifications for children and adult services and ensure child/adult protection and safeguarding is a key component.
- 6.3 Evidence of continuous improvement and compliance in quality and safety outcomes is achieved through the use of specific contractual arrangements and metrics with provider organisations including key performance indicators, CQUIN targets, quality schedules, systems to embed learning from incidents and complaints, comprehensive safeguarding policies and training strategies.
- 6.4 The NEL ICB safeguarding leads attend the health provider Safeguarding Committees and will feedback to the relevant NEL Safeguarding Team Meeting or if required, escalate to the NEL Looked after children Forum and NEL Safeguarding Forum, as appropriate.
- 6.5 The NEL ICB as a safeguarding partner and statutory body, works collaboratively with Safeguarding Boards to ensure a proactive approach is maintained to the commissioning and provision of health services that effectively safeguard and protect children and adults at risk of abuse.
- 6.6 NEL ICB in its leadership role as a Health statutory partner of the NEL wide Local

Safeguarding Children Partnerships (LSCPs) and Safeguarding Adult Boards (SAB) alongside the Local Authority and the Police. The ICB in its convening role contributes to resourcing (in kind, as well as funding) in order to support the LSCPs and SABs joint strategic safeguarding priorities, which should align with those of the ICB.

- 6.7 The NEL ICB ensures that its designated professionals and named GP's are integral to decision making within the NEL ICB and have the authority to work across local health economies to influence and shape the culture and practice within provider services.
- 6.8 Designated Safeguarding Professionals remain members of their respective team within the ICB Chief Nurses Office. Each is embedded within a Place based Partnership (PbP) 'gaining' assurance and becoming members of provider internal safeguarding fora. Close working across teams 'gains' system-wide assurance and earlier identification of PbP/system issues and risks. As well as borough specific responsibilities, safeguarding professionals are also allocated NEL-wide projects.
- 6.9 A new statutory guidance ([LINK HERE](#)) was published on 16 December, 2022. The key legislation that underpins it is included in the Police and Crime Sentencing and Courts Act 2022, requiring organisations within the ICS to work together to prevent and reduce serious violence within our local population. NEL ICB is a responsible authority along with police, local authority and other partners. The ICB is required to contribute to a Strategic Needs Assessment (SNA) at place (across the seven places including the City of London) to develop a problem profile and action plan to tackle serious violence. The designated professionals for safeguarding children and adults have been identified within the ICB to lead and assure local input to the SNA. They will facilitate the sharing of relevant health data, support appropriate commissioning within the health system and provide assurance to NHSE via the safeguarding commissioning Assurance Toolkit. Decisions regarding how funding is to be distributed locally will be a joint decision between the NEL responsible authorities. The ICB will also have its implementation costs met through the Home Office Funding stream. An action plan has been developed for the implementation of the ICB's responsibilities of the Serious Violence Duty.

7. Monitoring the strategy

- 7.1 Monitoring of the strategy will be through the NEL Safeguarding Forum. Service specifications and service level agreements will be reviewed to ensure safeguarding and quality elements of care are included within provider partner contracts.
- 7.2 Safeguarding will be routinely included in contract monitoring through regular contract management meetings with providers. Mutual aid and peer support is enabled through the standard setting guidance and network. Best practice is promoted through this ICS network and support is also provided through bespoke training. Quality and patient safety data and 'soft' intelligence will be collated to facilitate the identification, monitoring and analysis of safeguarding concerns in relation to vulnerable groups.
- 7.3 Annual Reports for Adult Safeguarding, Children and Looked After Children, will be provided to NEL ICB Quality, Safety and Improvement Committee and through that to the Board.

8. Supporting documents / evidenced based references

Evidence	Hyperlink (if available)
Children Act 2004	Children Act 2004 (legislation.gov.uk)
Care Act 2014	http://www.legislation.gov.uk/ukpga/2014/23/contents/enacted
Care Quality Commission Essential Standards of Quality and Safety Outcome 7: Safeguarding people who use services from abuse.	The fundamental standards - Care Quality Commission (cqc.org.uk)
Governments Mandate to NHS England 2022/23	https://assets.publishing.service.gov.uk/government/uploads/system/uploads/attachment_data/file/1065713/2022-to-2023-nhs-england-mandate.pdf
Health and Care Act, 2022	https://www.legislation.gov.uk/ukpga/2022/31/contents/enacted
Safeguarding children, young people and adults at risk in the NHS: Safeguarding accountability and assurance framework	https://www.england.nhs.uk/publication/safeguarding-children-young-people-and-adults-at-risk-in-the-nhs-safeguarding-accountability-and-assurance-framework/
Working Together to Safeguard Children (July 2018)	https://assets.publishing.service.gov.uk/government/uploads/system/uploads/attachment_data/file/722305/Working Together to Safeguard Children - Guide.pdf
Serious Violence Duty Statutory Guidance 2022	https://www.gov.uk/government/publications/serious-violence-duty

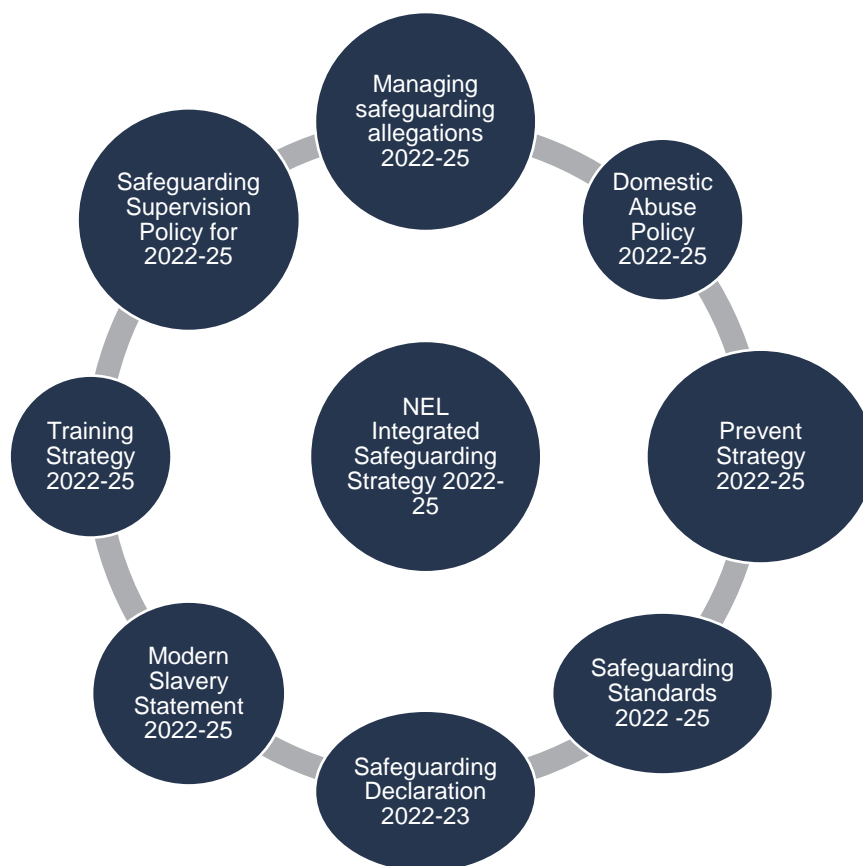
Appendix 1

Overview of how NEL ICB meets its strategic safeguarding objectives:

Provide senior and board-level leadership

- Senior leadership responsibilities and clear lines of accountability are in place for the ICB's safeguarding arrangements.
- Membership to NEL ICS Safeguarding Boards.
- The ICB has an LPS Project Lead to support the incoming implementation of Liberty Protection Safeguards (LPS).
- The statutory Health and Wellbeing board with responsibility for safeguarding has Executive ICB representation from NEL.

Figure 1- NEL Safeguarding Strategy and Policy Framework



Ensure safeguarding arrangements are in place

- Safeguarding is integrated within all NEL ICB functions including quality and safety, patient experience, healthcare acquired infections and management of serious incidents. There is close liaison with all commissioners of child, mental

health, learning difficulties and continuing healthcare services.

- The NEL ICB has secured the expertise of designated professionals, named GP's and designated paediatricians for Looked after children.
- The NEL ICB has leadership and mechanisms in place to support improvements in primary care engagement and practice in safeguarding.
- All relevant actions identified through Safeguarding Adults Reviews (SARs), Serious Case/Practice Reviews, Domestic Homicide Reviews (DHRs), and other serious incidents are carried out according to the timescales set out by the Local Safeguarding Children Partnerships', Safeguarding Adult Boards and the Community Safety Partnerships (for DHRs). Safeguarding professionals are expected to represent the ICB and contribute to these meetings at place level.
- The NEL ICB has a programme to ensure that staff, including board members, are trained to embed safeguarding within the commissioning process and are able to recognise and report safeguarding concerns.
- Important learning from national and local sources which relate to safeguarding adults and children at risk from abuse or neglect is routinely disseminated to staff within the ICB and across the health and social care economy.
- The NEL ICB publicises on its website, contact details for staff with specific safeguarding responsibilities, key learning and themes from local and national inquiries, and provides links to signpost NEL ICB staff and members of the public to organisations and support for adults at risk from abuse or neglect and children at risk of, or who have suffered significant harm.

Figure 2 - Clinical Reference Groups (CRGs)



Commissioning Safe Services

- There are effective commissioning, procurement and contract monitoring arrangements in place with all our commissioned providers and independent contractors which seek assurance that services are meeting their statutory safeguarding responsibilities, and in particular that staff are following approved NICE guidance, and considering transition of young people to adult services.
- All service developments are expected to take account of the need to safeguard people within the NEL community, and are informed, where appropriate, by the views and experiences of the most at risk members of our communities.
- There are processes in place to ensure that adult care placements (such as care homes or nursing homes) are based on knowledge of standards of care and safeguarding concerns.
- Following the responsible commissioning guidance, there are contractual arrangements for children and adults in 'out of area' provision including for children who are looked after and/or residential care for adults, where there are health needs.
- There are processes in place to disseminate, monitor and evaluate outcomes of all Serious Case Reviews, Child Safeguarding Practice Reviews, Safeguarding Adult Reviews and Domestic Homicide Reviews, recommendations and action plans within the ICB and with providers.
- The NEL ICB is able to demonstrate compliance with the Mental Capacity Act 2005 and the Deprivation of Liberty Safeguards 2009 through leadership, systems and processes.
- The NEL ICB is able to demonstrate that it has effective arrangements for sharing information with partners for the protection of children and adults that is compliant with legislation (Data Protection Act 1998) and case law to clarify issues of confidentiality and privacy.
- The NEL ICB Caldicott Guardian and Designated Professionals are available to advise staff and partner agencies on sharing proportionate health information.
- The NEL ICB has monitoring and reporting systems in place for safeguarding training.
- The NEL ICB endorses the partnership Looked After Children strategy in its plans to improve health outcomes of Looked After Children and the

commissioning of appropriate services to meet their needs.

- In addition, the NEL ICB supports the recommendations of public enquiries such as the Francis Inquiry (2013), Independent Inquiry into Child Sexual Abuse in Rotherham (2014), the Lampard Inquiry (2015), and the Ockenden Review (2020) (2022) regarding openness, transparency, duty of candour and leadership, being integral to service delivery and improved outcomes.

Appendix 2 - Glossary of terms and abbreviations

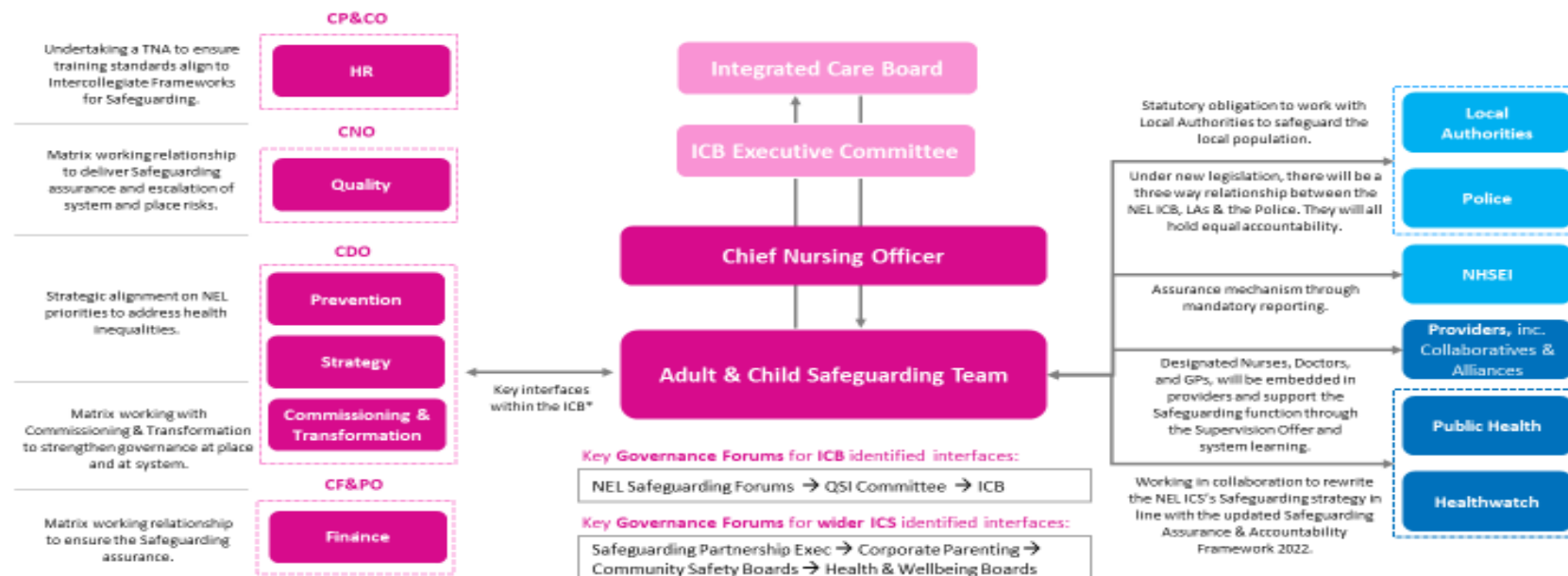
No.	Terminology/abbreviation	Explanation
1.	BCYP	Babies, children and young people
2.	Care experienced	Includes looked after children and care leavers.
3.	Children	Includes babies, children and looked after children. Anyone under the age of 18 is defined as a child.
4.	CQUIN	Commissioning for Quality and innovation payments framework
5.	CYP	Children and young people
6.	Looked after children	Legal terminology from the Children Act 1989. It is recognised that children do not like the use of acronyms to describe them and some would prefer to be called children in care or children looked after.
7.	Young people	18 -25-year age group and includes care leavers and care experienced.

Appendix 3 - Figure 3 Safeguarding interfaces in NEL



| Safeguarding – Team Interfaces

The model below provides a high level overview of the key interfaces between Safeguarding team and other critical teams within both the ICB and the ICS. Objective is to capture the nature of interfaces between the different stakeholders and the relevant governance forums.



*Non exhaustive list.